

Using Analytic Hierarchy Process for Analysis & Choice of Brazilian Cargo Airlines

This paper presents a methodology for analysis of relevant criteria and the choice of domestic cargo airlines, using the Analytic Hierarchic Process (AHP) method. It is further believed that the results of this work will be directly useful to airports, cargo terminals, air freight forwarders, highway transport companies, airlines and also to the National Civil Aviation Agency (ANAC) in putting forward efficiency-boosting suggestions by way of process improvements and audits, personnel training, infrastructure planning, and demand management.

By Miguelangelo Geimba de Lima*, Clarissa Côrtes Pires, Claudio Luis Piratelli, Mischel Carmen Neyra Belderrain and Anderson Ribeiro Correia

The demand for air cargo transport observed in Brazil has experienced high growth rates. From 1994 to 2003 domestic and international air cargo traffic in Brazil increased by 35.9 % (DAC, 2003). In 2001 cargo handling (storage and terminal handling) accounted for 28.8% of total revenue for INFRAERO, the company that runs the 66 largest airports in Brazil.

According to the cargo transport registry, in 2000 this mode was responsible for just 0.33% of the cargo transported in Brazil, in ton-km (GEIPOT, 2005). However, considering the value of the cargo transported by air for overseas trade, its contribution becomes relevant. Air transport in 2000 accounted for a 28.9% share of total imports to the country, and 8.8% of total exports (Keedi, 2001). Moreover, air transport has been taking on an important role in organizing production as a result of its speed, flexibility, reliability, and security, with great potential for being used in new logistics strategies adopted by companies, mainly in the transport of high added-value goods.

Despite the importance of the cargo sector in Brazil, many authors consider in of little relevance to the country (Burmam, 2000; DAC, 2004) and have concentrated mainly on the study of passenger operations. Nevertheless, in many airlines revenue from cargo operations is higher than revenue from passenger operations.

This study, guided by these concerns, aims to make a contribution for the Brazilian air cargo sector by present-

ing a choice methodology using the Analytic Hierarchy Process (AHP). Considering as criteria cost, speed, reliability and flexibility of logistics services, other secondary aspects of performance were also specified, based on the studies done by Lima, et al. (2006).

Assessment of Logistical and Competitive Performance

According to Christopher (1997), the challenges faced by logistics are tied into the explosion of client services, time comprehension, globalization of the industry, and organizational integration. Added to this are the challenge of understanding and the application of the concept of logistics in companies. The competency of each organization determines how these challenges are handled to serve the client, in the right time, in the right quantity, with the appropriate quality and costs for products and services. Beamon (1999) suggests that a good assessment of the performance of the logistical chain must be based on three dimensions: resources, exits or outputs, and flexibility.

Slack et al (1997), Ballou (2004), and Corrêa, Gianesi & Caon (2001), define



the aspects of main competitive performance to define secondary aspects from the perspective of the clients (Figure 1). This view of monitoring of competitive performance aspects from the client perspective shaped the definition of the decision criteria in this research. The quality criterion will not be considered in this study as it only describes product specifications.

Analysis Model of the Agents in the Brazilian air Transport

To determine the performance criteria for the agents in Brazilian air cargo transport the model in figure 2 was used.

According to the model in question, the main agents in defining the performance analysis criteria for the cargo airlines are the air freight forwarder, because they are the main direct clients. In this study three managers were selected from these companies based on the study done by Lima et al (2006).

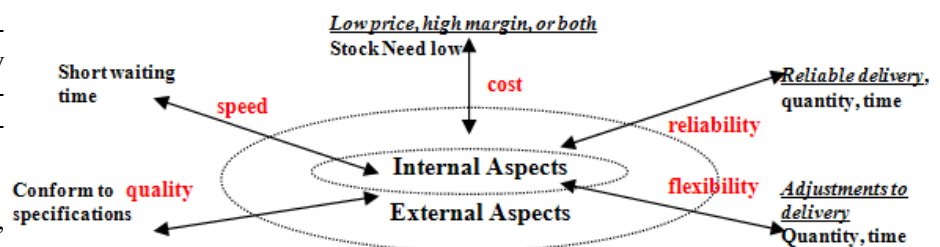


Figure 1: External aspects of performance. Source: Adapted from Slack et al (1997)

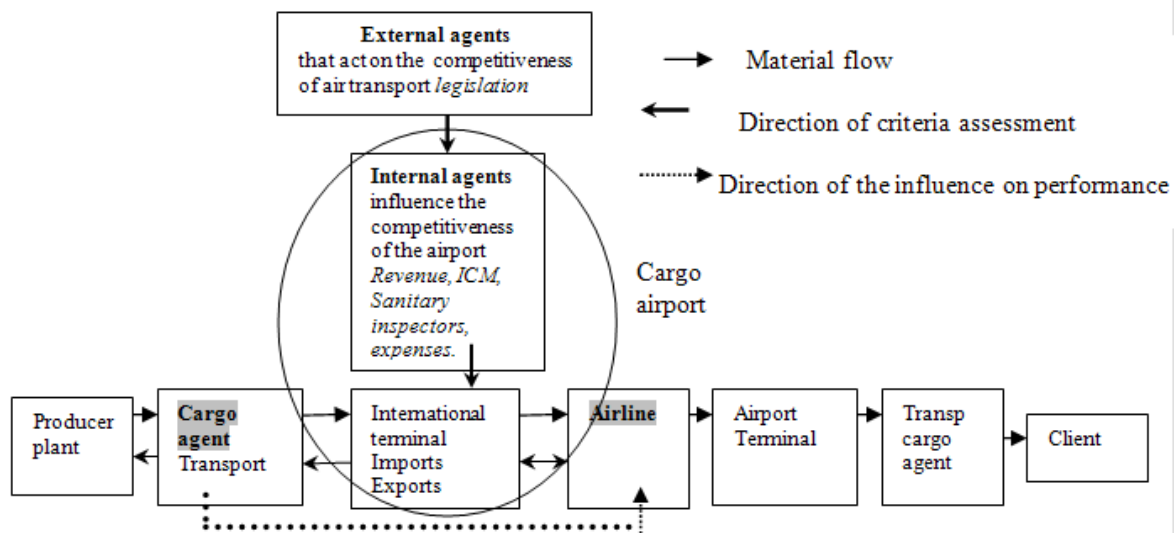


Figure 2: Agents in the Brazilian air system. Source: Adapted from Lima et al.2006

Airlines in the Sample

The eight leading Brazilian cargo airlines were selected in this study, namely: Tam Linhas Aéreas, Gol Linhas Aéreas, Variglog, Skymaster Airlines, Beta – Brazilian Express Transporte Aéreos, TCB-Transportes Charter do Brasil, ABSA-Aerolinhas Brasileiras, Oceanair Linhas Aéreas.

Consolidation of the Scenario and Decision Analysis

A large number of different factors must be considered in the decision-making process when assessing which air freight forwarder can be hired. To this end, in determining the criteria and drawing up the hierarchical structure (figure 3) the results presented in the work done by Lima et al (2006).

Interviews with the three airline customers were done in order to compare the alternatives amongst the criteria, sub-criteria and choice of the best airlines.

The results of the analysis of criteria and sub-criteria for performance and choice of the best Brazilian cargo airlines in the opinion of the air freight forwarder are shown in graphs 1, 2, 3, 4, 5 and 6 and chart 4. These are representative in two situations: one further reaching, and another a little more delineated, with the creation of sub-criteria for each main criterion proposed.

Results of Pairwise Decision Comparison Criteria

Firstly the most important variable to be considered by the air freight forwarder is regarding cost (0.409, graph 1). In

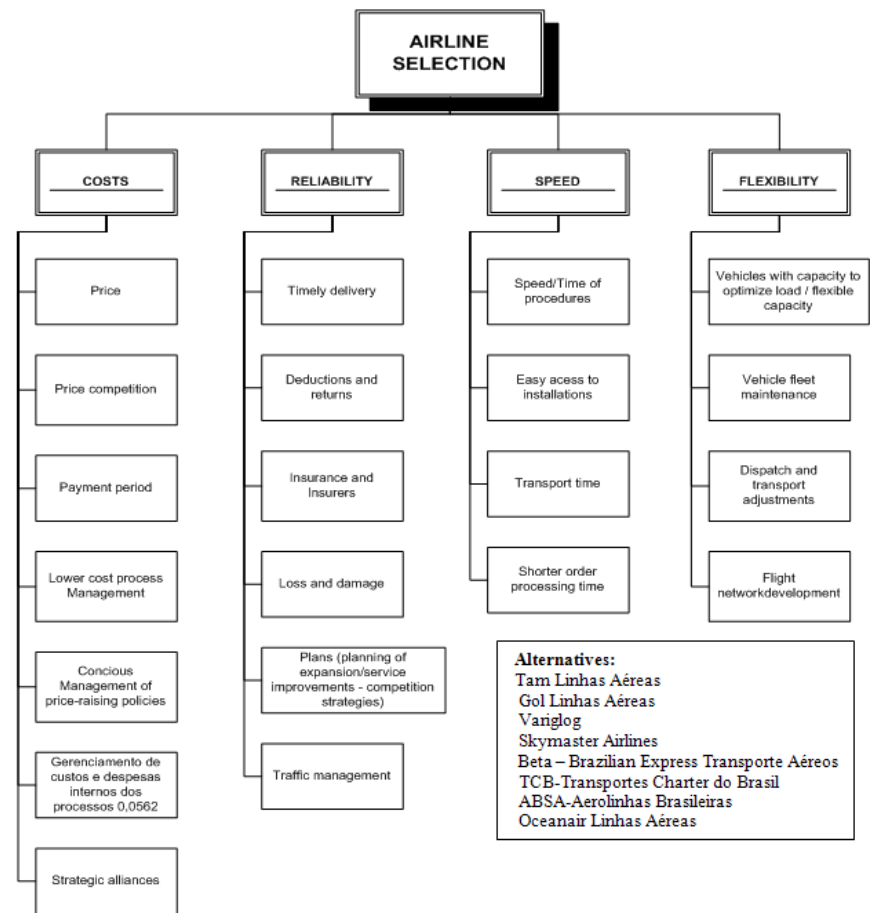
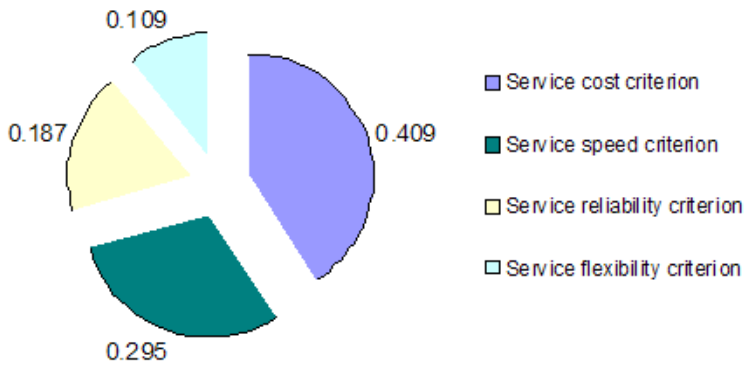


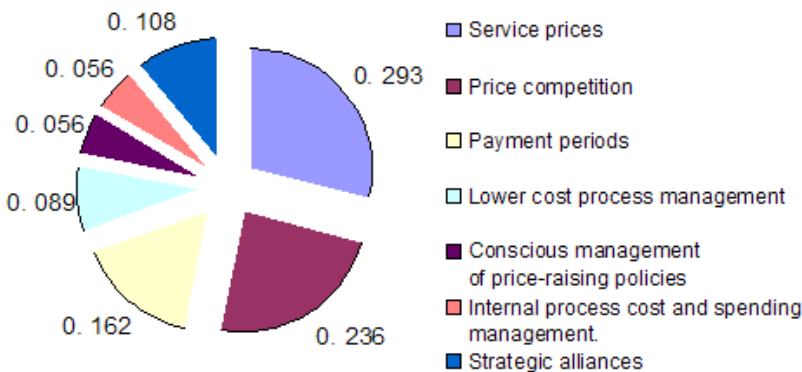
Figure 3: Hierarchical decision structure in air cargo company analysis. Source: Adapted from Lima et al, (2006).

practice the decision criteria for airlines related to cost are at the top of the structure, as the reduction of costs related to the tariffs charged per kilo transported and overall ground operation costs generate higher margins for the air freight forwarders. The criterion related to speed is the second most important aspect (0.295), as it represents sub-criteria that require improvements in land transport to produce faster and lower cost operations.

The interrelations showing certain variables associated with the generation of additional costs through loss and damage, deductions and returns, amongst others, are represented in fourth and penultimate place by the reliability criterion (0.187 as in graph 1). Flexibility is a decision criterion that is represented in this study as being the evolution of the flight network, vehicles with flexible capacities, and other factors. This aspect is in fifth and last place in



Graph 1: Pairwise comparison of decision criteria for air cargo companies.
Source: Authors



Graph 2: Pairwise comparison of the sub-criteria regarding service costs
Source: Authors

degree of importance (0.109), to the surprise of the authors.

Pairwise Comparison of the Sub-Criteria Regarding Service Costs

As previously seen, the cost criterion was considered the most important factor in the air freight forwarder decision process in choosing Brazilian airlines in their daily operations. This happened because the sub-criteria represented the most important factors in boosting margins through various operating cost reductions. A detailed explanation creating decision sub-criteria was then proffered.

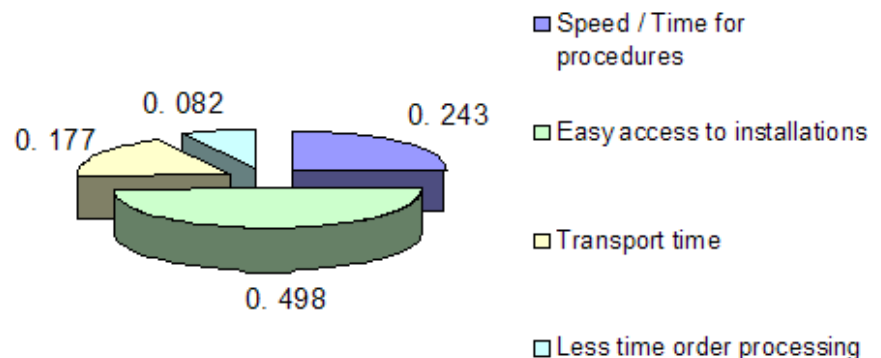
According to the interviewees, the price sub-criterion for services was considered the most important in the main hierarchy regarding costs (with 0.293 according to graph 2). It should be remembered that the airlines charge tariffs using cargo volume or weight, which sharply alters the formation of their prices, as the differentiation in the size of the airplanes makes certain companies better able to offer their services than others.

Price competition is the second most important sub-criterion (with 0.236

according to graph 2), due to the lack of infrastructure needed for the more efficient running of the processes, leading to better quality and consequently lower costs.

In practice price competition generated by the airlines to gain larger market share is directly dependent on the business model they have created and the external factors provided by the transport infrastructure throughout the country.

Payment periods and strategic alliances are two factors of a certain importance for the segment in question (with 0.162 and 0.108 respectively). This was heavily criticized by the professional surveyed as they claimed the companies do



Graph 3: Pairwise comparison of the sub-criteria regarding the speed of services
Source: Authors

not treat them as true “partners,” but rather they just offer the option of transport packages to the locations they operate, not generating the information needed for better operational planning.

Pairwise Comparison of the Sub-Criteria Regarding Service Speed

The sub-criterion representing ease of access to installations was in first place in the survey (with 0.498 according to graph 3) as regards the speed of service provided.

This happened because shorter times of the transport fleet and the professionals involved are very important for the air freight forwarder, enabling their infrastructure to generate more business opportunities and reducing situational costs while waiting.

In the same way, the time involved in procedures also generates improvements in the business, reducing avoidable expenses and generating greater use of the existing structure. For this reason this sub-criterion is in second place in the survey as regards the speed of services provided (0.243). Other aspects, such as shorter time in order processing and time involved in transport are less important sub-criteria for the survey in question (with 0.082 and 0.177, respectively), which highlight the situations directly linked to air transport processes, which place factors such as speed relatively high. The companies and professionals surveyed criticized issues regarding shorter order processing time regarding the process’ relation with the moment it is done as the airlines only input the information on the shipments (knowledge that is passed onto the end client) when it is available for the palletizing process, increasing uncertainty and forcing cargo agents to make their fleet available, increasing costs.

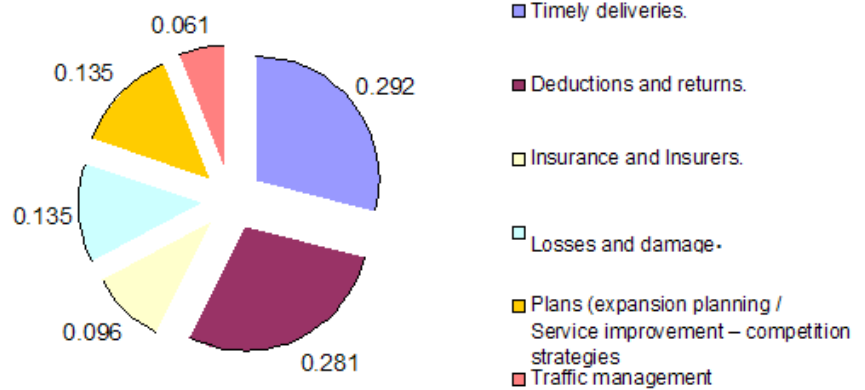
Pairwise Comparison of the Sub-Criteria Regarding Service Reliability

Timely deliveries were considered the best aspect regarding the service reliability criterion (with 0.292 according to graph 4). There was then an explanation from interviewees as regards the timely execution of processes, as there are no further complaints about delays in airplane arrivals. Deductions and returns represent the second most important sub-criterion in the survey (0.281) because there is a tendency for airlines to accept the cargo without knowing what is being transported with a tendency for the product not to be accepted during handling and dispatch, meaning that clients have to take on additional return expenses. Expansion plans and losses and damage are in third place in decision analysis (0.135). This happened in the midst of a discussion about improvements to the infrastructure without causing losses to factors related to service levels that result in high margins. Insurance and insurance companies are an aspect of performance of little importance (0.096) because there are no further discussions about compensation for accidents or aeronautical incidents. In last place in the survey is the issue of traffic management (0.061) because there is said to be no need for a release of capital to track cargo in airplanes with known routes.

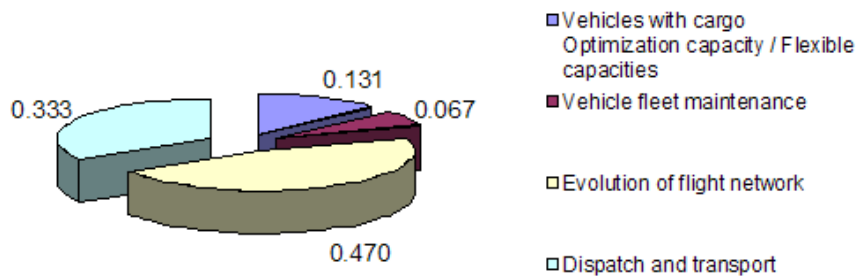
Pairwise Comparison of the Sub-Criteria Regarding Service Flexibility

In the context of flexibility of services provided, one factor is considered of great importance due to the demand created by the dynamic segment of domestic and international cargo transport.

Thus, developing the number of origins, destinations, and connections, as well as



Graph 4: Pairwise comparison of service reliability. Source: Authors



Graph 5: Pairwise comparison of the sub-criteria regarding service flexibility Source: Authors

increasing the number of cities served by the service provider increases the chances of making clients more loyal. Hence the evolution of the flight network is the first sub-criterion on the decision tree (with 0.470 according to graph 5). So, as with the evolution of the flight network, the adjustments in dispatch and transport are also of great importance for the market in question (0.333), as they reduce the instability caused by uncertainty when it comes to dispatching.

Ranking of Brazilian Airlines from the Client Standpoint

As its main proposal this model presented a ranking of the leading Brazilian airlines using the criteria selected and the total points given by

the air freight forwarder.

Chart 1 shows the results from the nine companies in the sample, the three leading airlines being represented in red (highest score), yellow and green.

The results from the model in the view of the authors are in line with reality. This is because TAM Linhas Aéreas is in first place in global assessment, showing a business model that constantly seeks greater competitiveness through air cargo operating cost reduction, with the necessary infrastructure for ground service in order to reduce the time taken in processes, and the flight network constantly being altered to cover every opportunity. It thus has its process focused on serving the needs of its clients.

Brazilian Airlines	Criteria				
	Cost	speed	reliability	flexibility	total
TAM linhas Aéreas	0,068	0,047	0,032	0,022	0,169
Gol Linhas aéreas	0,064	0,040	0,040	0,017	0,162
Variglog	0,052	0,044	0,018	0,014	0,128
Skymaster Airlines	0,059	0,033	0,020	0,011	0,123
BETA- Brazilian Express Transportes Aéreos	0,056	0,034	0,020	0,011	0,121
Tcb - Transportes Charter do Brasil	0,042	0,033	0,019	0,011	0,104
Absa -Aerolinhas Brasileiras	0,042	0,033	0,019	0,011	0,104
Oceanair Linhas Aéreas	0,027	0,031	0,019	0,011	0,088
Total	0,409	0,295	0,187	0,109	

Chart 2: Ranking of Brazilian airlines from the client standpoint. Source: Authors

The company only failed to reach first place in reliability, as in this regard GOL was unbeatable. This company scored very well in all criteria, coming second in costs and flexibility, and third in speed.

The results of this survey also surprised the authors in this respect, as it had not been expected that a company such as GOL, which began cargo operations only a short while ago more because of an operational issue than an idea that good business opportunities existed (considering that the company's business model did not include cargo transport) could achieve such results. Operational infrastructure issues in airspace and airports mean that its airplanes have more time on the ground. Hence GOL could not achieve its pre-stipulated concept as a low fare company, and so invested in cargo to bring in revenue.

In third place was the company that everyone had expected to be in first place, as Variglog has the largest infrastructure in the sector. It appears amongst the first places only in issues related to speed, which is not a surprise considering the company's investment in its operational structure. Currently, with the crisis being experienced by the Varig group, Variglog has reduced its flights on all routes, sharply reducing its domestic and international market share. However, there has not been an overall fall in its scores, hence it has remained at the top of the global assessment by domestic air freight forwarder.

Skymaster was fourth in the decision tree for interviewees, and third in the criteria related to costs, and reliability of the service provided. This can be explained by analysis of its business model, considering that it does not carry passengers, so increasing air cargo transport to the destinations it serves, having the chance to reduce costs and improve processes because of its infrastructure to work exclusively in this segment.

In a practically identical situation to Skymaster is Beta, as it has exclusive

infrastructure for cargo transport. The company scored similarly to Skymaster, also coming third for reliability of its processes.

According to specialists in the sector, the air cargo market cannot be studied without these two companies, as they are present in all the possible analysis of the segment.

Surprisingly, TCB and ABSA tied in all the decision criteria. This happened because they have not improved their structures to serve all the main demand centers, keeping their businesses centralized and creating operational obstacles to agents outside their areas of service.



Final Considerations

Increased competition requires companies to be more competitive and to have full knowledge of the environment they are in. This leads to a need for the development of decision making methods regarding the criteria linked to their operations, so allowing analysis of competitiveness and logistical systems.

The modeling developed has produced a ranking of the main Brazilian airlines using the sub-criteria selected by the air freight forwarder.

The results produced by the modeling provided new insights not only for the authors but also for the specialists interviewed throughout the specificities presented by this study.

It has also been shown that criteria such as those related to cost are still considered more important, with higher margins than for other possible situations.

This has denoted a need to create improved business and operating conditions so that other opportunities can be created, thus fostering better management, making specialists and professionals on the market in question consider other aspects that influence all the processes.

References

- Ballou, R. H. (2001), *Gerenciamento da cadeia de suprimento planejamento, organização e logística empresarial* 4 ed. Porto Alegre Bookman.
- Beamon, B. M. (1999), *Measuring supply chain performance*. *International Journal of Operations & Production Management*, Bradford, v. 19, n. 3, p.275-292.
- Burmann, P. (2000), *Análise Prospectiva do Mercado de Carga Aérea no Brasil*. Tese de Mestrado, COPPE/UFRJ, Rio de Janeiro.
- Christopher M. (1997), *Logística e Gerenciamento da Cadeia de Suprimentos, Estratégias para Redução de Custos e Melhoria dos Serviços*. São Paulo: Pioneira.
- Corrêa, H.L. Giansi, I.G.N.Caon (2001), *Planejamento, Programação e Controle da Produção MRP II/ERP*. São Paulo: Atlas, 452p.
- DAC (2004), *Estudo de Carga Aérea Internacional no Brasil*. Departamento de Aviação Civil, Ministério da Aeronáutica.
- DAC (2003), *Anuário do Transporte Aéreo*. Departamento de Aviação Civil, Ministério da Aeronáutica.
- Lima, M. G., Nogueira, R. Q., Correia, A. R., Felipe, D. (2006), *Aspectos de desempenho competitivo: um estudo exploratório com os atores do modal de carga aérea no Brasil*. In: IV Simpósio de Transporte Aéreo (SITRAER), Brasília.
- GEIPOT (2005), available at www.geipot.gov.br, last access on may, 02 by 2005.
- Slack, N., Chambers, S., Harland, C., Harrison, A. and Johnston, R. (1997), *Administração da produção*. São Paulo: Editora Atlas.

About the Authors

Miguelangelo Geimba de Lima, Clarissa Côrtes Pires, Claudio Luis Piratelli, Mischel Carmen Neyra Belderrain and Anderson Ribeiro Correia work at the Aeronautical Institute of Technology, São José dos Campos, SP – Brazil.